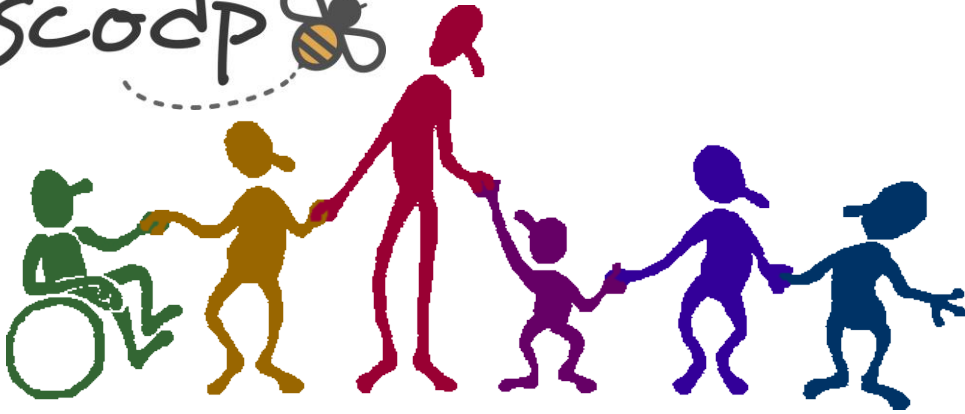


scodp 



IPSWICH DLG

DISABILITY LIAISON GROUP

Are you a disabled person? Do you have a disabled child? Do you care for a disabled person?

Suffolk Coalition of Disabled People (SCODP) are launching a new group in Ipswich for disabled people, parents (of disabled children and adults) and carers to come together and talk about any issues that you may have or experiences that you wish to share.

The DLG will be guided by its users and what they would like to discuss at the group.

Please contact us if you would like to attend or if you have any suggestions on topics.

Important Notice Regarding the Co-Op Education Centre

As this is a family venue and it is likely that young children will be present within the building, it is vital that those attending are aware that bad language and disruptive behaviour cannot be tolerated for the safety of the children and their parents.

This group has been kindly funded by Councillor Bole at Suffolk County Council. We would like to take this opportunity to thank Councillor Bole and Suffolk County Council for their commitment to this project.



**Wednesday 9th May
2018 at 10:30am -
12:30pm**

**Co-Op Education
Centre, 11 Fore Street,
Ipswich IP4 1JW**

**Free parking and
light refreshments
provided**

**Car park entrance off
Waterworks Street
(Sat Nav: IP4 1JG)**

**Register your place
now**

**SUFFOLK COALITION OF
DISABLED PEOPLE**

Contact: Sophie Hawkins

01473 557577

sophie.hawkins@scodp.org.uk

www.scodp.org.uk